

Secondo i risultati di un controllo effettuato, Apex ha scoperto che Epson può aggiornare le stampanti con cartucce (T29 / T33). Dopo l'aggiornamento, il nuovo firmware non riconoscerà più le cartucce compatibili avvertendo con il seguente messaggio "Cartuccia d'inchiostro non viene riconosciuta. Si prega di sostituire la cartuccia. "
 (L'avviso di errore viene visualizzato come segue)



Le stampanti prodotte in e dopo il dicembre 2015 sono soggette ad aggiornamento. Si consiglia caldamente di non procedere a tale aggiornamento altrimenti non potrete più utilizzare le compatibili fino ad ottobre 2016.

Maggiori dettagli di seguito.

Epson VI Firmware Update List						
Printer Model	Model	Region	Production Date	Preloaded Firmware Version	Updated Firmware Version	Test Result
EPSON XP-630	T33		January, 2016	NQ08G1	Not update yet (new firmware is available)	NG
EPSON XP-830	T33	EUR	November, 2015	NP30FB	No	OK
EPSON XP-530	T33		January, 2016	NR30FB	NR18G3	OK
EPSON XP-635	T33		January, 2016	NQ26FB	NQ18G3	OK
EPSON XP-235	T29		December, 2015	FE01G3	No	NG
EPSON XP-235	T29		April, 2016	FE01G3	No	NG
EPSON XP-235	T29		January, 2016	FE24F8	FE01G3	OK
EPSON XP-335	T29		January, 2016	JE24FB	No	OK
EPSON XP-435	T29		January, 2016	ME24F8	ME10G3	OK
EPSON XP-332	T29		January, 2016	JE24F8	JE10G3	OK
EPSON XP-432	T29		December, 2015	ME24F8	ME10G3	OK

Come determinare la data di produzione della stampante....

【How to Check the Production Date on Epson Printers】

1) You can check the production date from the label on the printers:



2) You can check the production date from the bar code, the bar code is on the inner part of the printer (near the carriage):



You can speculate the production date is January 26th, 2016. Please have more details below:

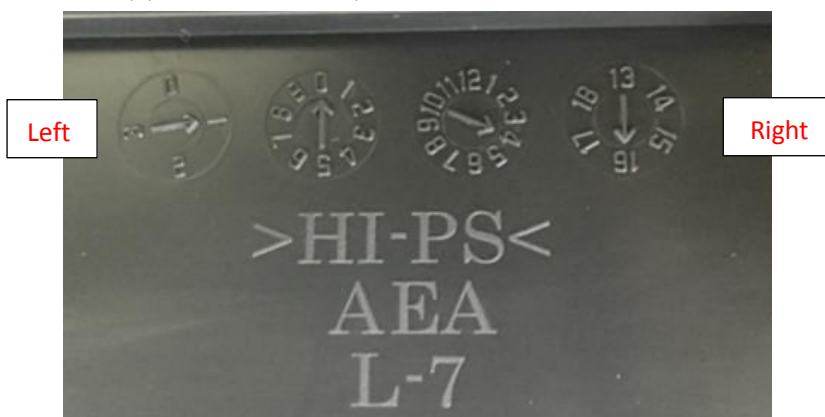
Please count from right to left

The seventh number stands for the year (shown in number)

The sixth number stands for the month (1=January, 1~9=from January to September; X=October, Y=November, Z=December)

The fourth and the fifth number stand for the day (shown in number)

3) You can check the production date from the bottom of the printer, please take out the tray box (not every printer has the tray box)

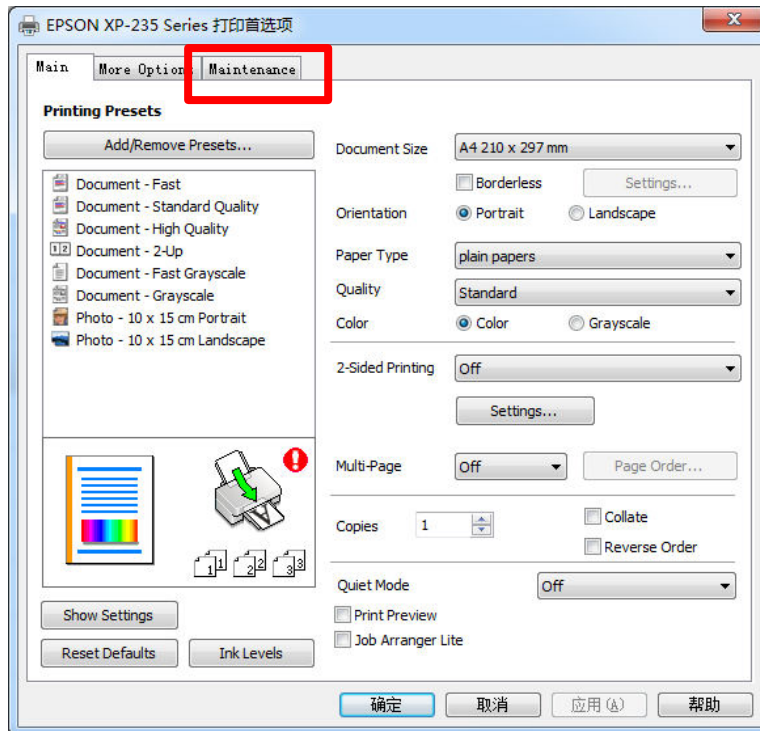


The first clock stands for year, 16=2016; the second clock stands for month, 4=April; so the production date of the printer here is April, 2016.

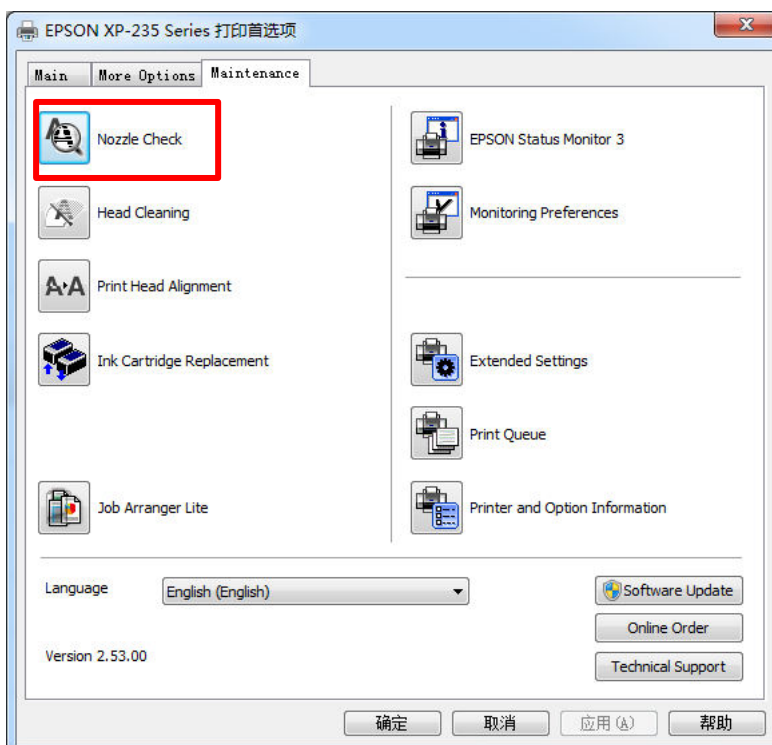
【How to Check the Firmware Version on the Epson Printers】

1. Check through printing the “Nozzle Check” page:

1) Open the printer driver; click “Maintenance” (see the red square)



2) Click “Nozzle Check”:

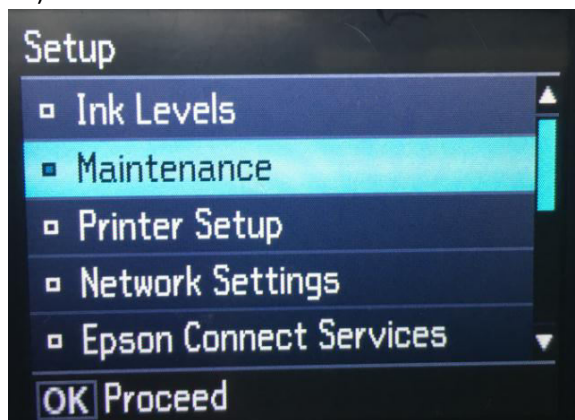


2. Check through printing the firmware version page:

1) Click "Setup":



2) Click "Maintenance":



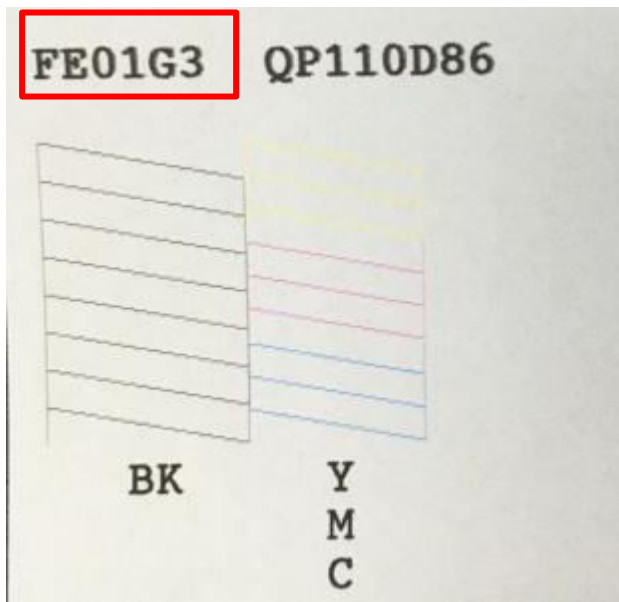
3) Click "Nozzle Check" to print the firmware version page.

3. For the printers without display screens (Epson XP-235), please operate as follows:

1) When the printer is power-off, please press the "ink button", then press the "power button" (do not release the "ink button"), and wait the indicator light flickers 3 times and then release the "ink button" and the "power button". Now you can print the firmware version page.



4. The firmware version page is shown as follows, the firmware version is shown within the red square.



“Apex” herein refers to Apex Microelectronics Co., Ltd. The information contained herein is subject to change without prior notification. Apex shall not be liable for technical or editorial errors or omissions contained herein. Photographed products may not always match the description.